






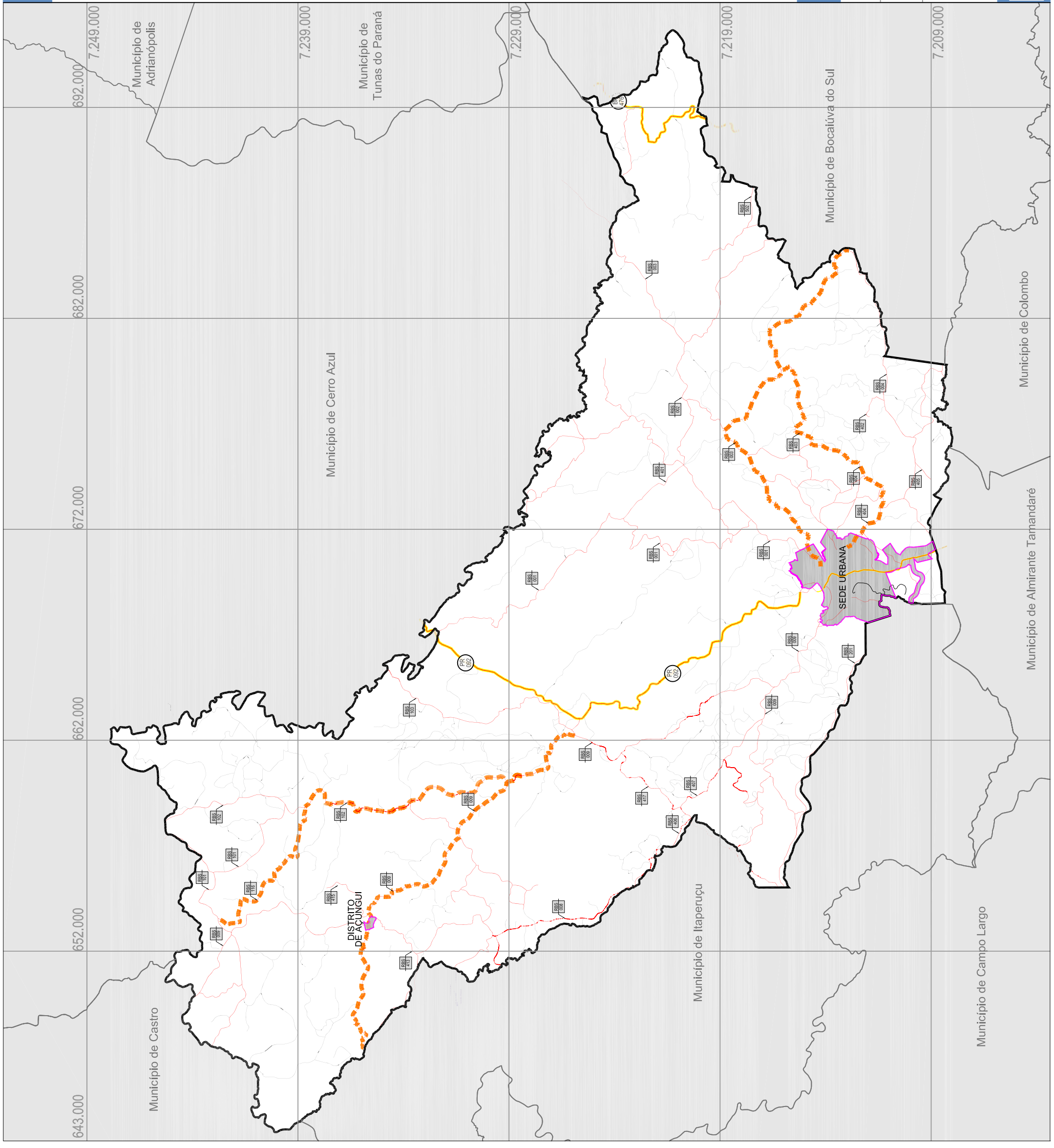




# LEGENDA

-  Limite Municipal
-  Perímetro Urbano
-  Rodovia Federal e Estadual
-  Ferrovia

-  Estradas Principais
-  Estradas Secundária
-  Eixos Turísticos



Mapa:

## SISTEMA VIÁRIO MUNICIPAL

Escala:

Escala: 1:175.000

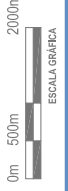
Município:

Rio Branco do Sul - PR Dezembro/2011

Data:

ANEXO **06**

Base Cartográfica:  
DSG/IBGE/COPEL, Escala 1:50.000  
Articulação: Socavão (SG.22-XA-VI-4, 2000), Cerro Azul (SG.22-XB-IV-3, 2000) Três Correes (SG.22-XC-III-2, 1964),  
Rio Branco do Sul (SG.22-XD-1, 1965), Bocaiúva do Sul (SG.22-XD-2, 2001), DATUM SAD-89  
Fonte:  
Prefeitura Municipal de Rio Branco do Sul e PARANACIDADE, 2010  
Elaborado por:  
Ecológica Tecnologia e Consultoria Ltda.



ESCALA GRÁFICA

Supervisão  
  
Execução  


### PLANO DIRETOR MUNICIPAL

ANEXO DA LEI DE MOBILIDADE E SISTEMA VIÁRIO